



 EUREKA

# Lighting Ideas - Residential Commercial quality

By Kitchen Icons - Building Products

Lighting designs to  
Compliment your  
Kitchen and dining.



**Inspiration:**

48 in. AGA Mercury  
Gloss Black  
Bold, clean design  
with an art deco feel



Following are a few suggestions that pair with this style of range.  
More options at <https://www.eurekalighting.com/>



Unique alternative to traditional recessed can lighting.

Possible areas: Ceiling in great room area, kitchen.

**“Outline” by Eureka**

Multiple variations in black and white

<https://www.eurekalighting.com/products/outline-5/>



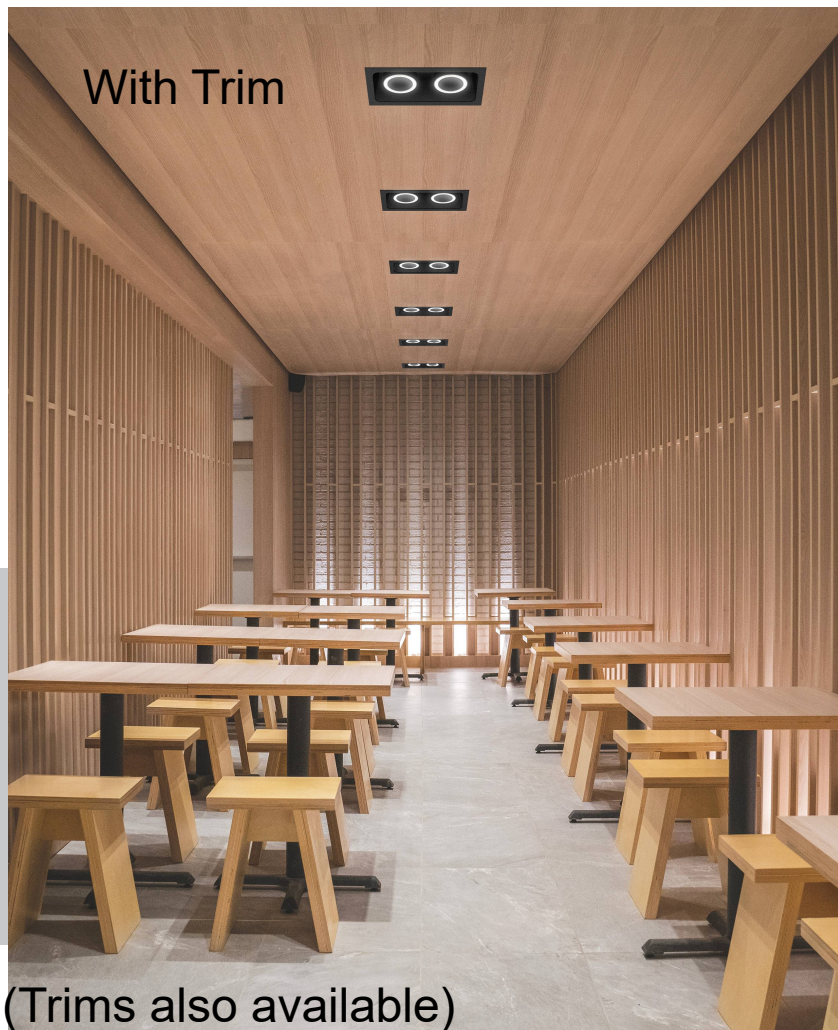
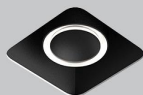
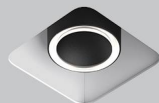
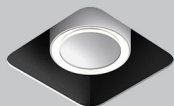
Fully adjustable beam. Shown with Trim



Trimless for new construction



## Outline - variations



With Trim

Trimless Options for new construction (Trims also available)

## ISLAND – KITCHEN



 EUREKA

“Metro” CEILING SUSPENDED **4266B-SNW** 22 in wide

<https://www.eurekaling.com>

22 in Wide “**COUNT**” by  
Eureka

Island - Kitchen







“Gatsby” by Eureka 4266B-NPM 13 in wide.

Consider 2 over Island <https://www.eurekalighting.com/products/gatsby/>





**“DUKE”**

# Island - Kitchen

<https://www.eurekaling.com/products/duke/>  
13.6 inches wide. Consider two over island





<https://www.eurekalighting.com/data/Export/Files/Document/SpecSheet/4427-CEL.pdf>

## “Drop Celeste”

<https://www.eurekalighting.com/products/drop-celeste/>

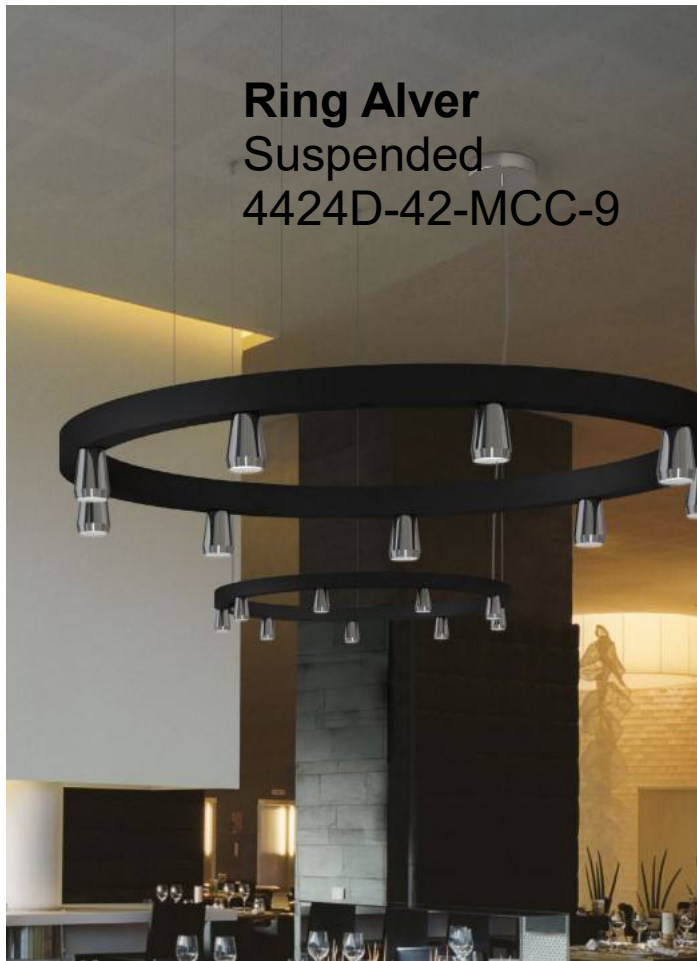
Kitchen Island  
Or Dining Table

Variety of configurations  
Shown in frost



Coordinates well with “Ring” over dining room





**Ring Alver**  
Suspended  
4424D-42-MCC-9

## Dining & Kitchen



**Bouquet Sprocket -**  
Kitchen Island  
4428-10-CFD-7



RING

Get down



**Ring Sprocket CFD (dining)**



“RING” More Options - Can pair with companion lighting – coordinating the Kitchen and Dining area



Shown: Ring Silene (above)

**Silene Canopy**  
Kitchen Island



# RING – Options

Can be Down lighting  
or Up lighting

ALVER-MCC



STUBBY STACK-ST5



GALLERY-NAH



SPROCKET-CFD



SILENE-JDJ/JDJA



SHAKER-QFI



SLIM STACK-SLS



SILENE-JMJ



KISIS-NFM



# SCONCES

Mini  
Silene

Various  
sizes

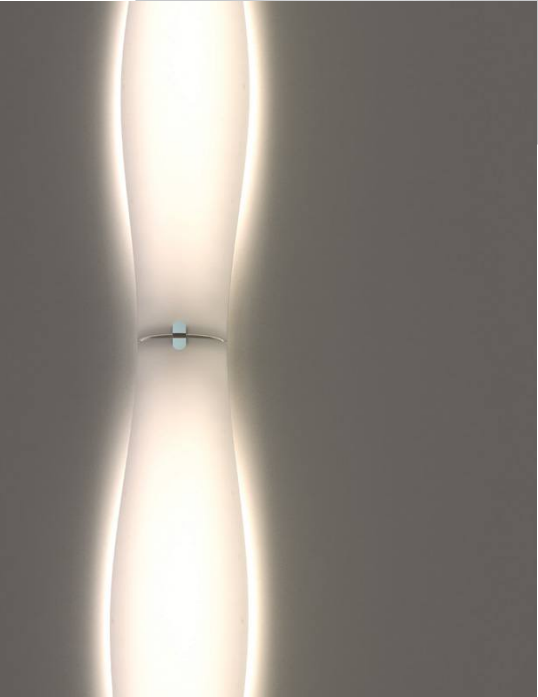


Flex Media 3415 8.7"W x 12"H



**Senet**

**VANITY**



**Moonrise Plus**

 EUREKA



## EXTERIOR LIGHTING

<https://www.eurekalighting.com/en/products/out/>



## Ceiling Fans – Exterior

See choices here:

<https://www.luminancebrands.com/fans/outdoor/cf605grt.html>



Wet Rated “Rip Tide” by Kathy Ireland  
(Formerly Emerson) DC motor.  
On display at Kitchen Icons (1<sup>st</sup> fl. Patio)

Ceiling Fans – Interior  
By Kathy Ireland - Formerly Emerson

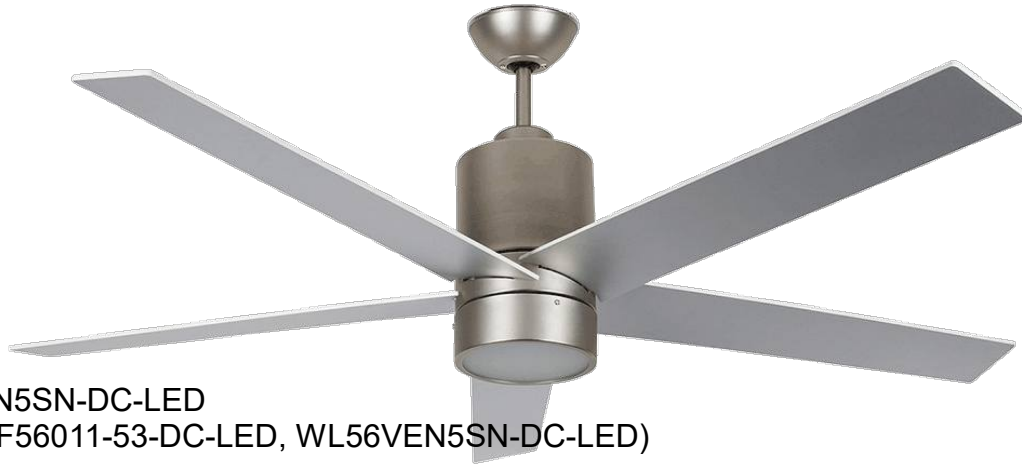


AMHURST LED CEILING  
54 inch. LED



- CONCORD FANS – Interior

<https://www.luminancebrands.com/fans/56ven5sn-dc-led.html>



56VEN5SN-DC-LED  
(WL56VEN5SN-DC-LED, WL56VEN5SN-DC-LED)

**VENTO FAN-** DC Motor

56 IN VENTO

See more fans here: <https://www.luminancebrands.com/fans.html>



Contact us at 608-317-5700 to learn more about our Kitchen Icons curated lighting selections.

Quality. Style. Function